



END OF SCHOOL NEWSLETTER

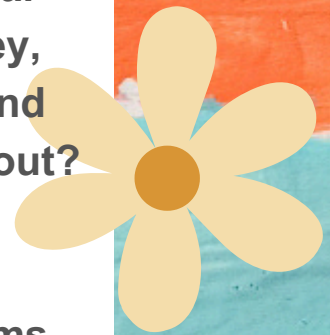
Last Bits of
Information & Wishes



Lakedell School

Before we left for summer, we just wanted to share some important information for families.

- 1) 4-Day Rotational Calendar - what does that mean?
- 2) Progress Report Information - how to access.
- 3) Re-enrolment information - please encourage others to register. If anyone knows of any new students that would like a tour of the school, we can arrange it!
- 4) Lakedell School and Parent Council would like to hear from you! You will receive the link to a Google Survey, or there will also be printed copies available at the end of year picnic. Could you please help us by filling it out?
- 5) Supply lists are attached.
- 6) Draft Classroom Schedules are attached.
- 7) We have included flyers/posters for summer programs available.




SCHOOL OFFICE
IS OPEN!

August 28th & 29th

FIRST DAY OF CLASSES
September 3rd

Note:
Kindergarten's
First Day Will
Be Thursday,
September 5.

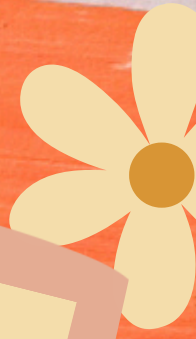




Link to complete survey. We appreciate your opinions & knowledge! If the link will not work for you, typing the URL into the address bar, should pull it up.

<https://forms.gle/8szsAvguzL667AfZ8>

The 2024-2025 school day will be based on a 4-Day Rotational Calendar. What does this mean? Rather than follow a schedule based on Monday-Friday, we start the school year on a Day 1 (Tuesday, September 3), go through Days 2, 3, and 4, then cycle back to a Day 1. Kindergarten will also be following this calendar throughout our school division. Our Kindergarten Days will rotate on a Day 1 and Day 3 throughout the year.



Please fill in the Lakedell School & Parent Council Questionnaire that was sent by email.



Re Enrollment for 2024 -2025

Please remember to do your Student Reenrollments for 2024-25 School year in PowerSchool under SchoolEngage.

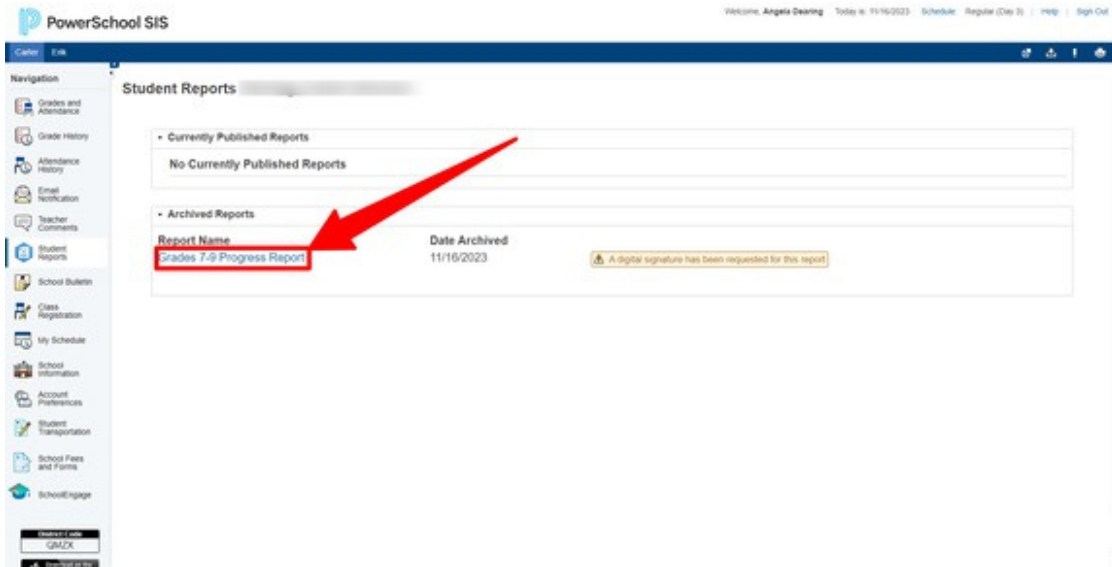
Progress Reports

Are on line in your PowerSchool Parent Portal

see the instructions on the following pages on how to view

Step 3: Choose the Report

Click on the report you wish to view under “Archived Reports”



Step 4: Open the Report

After clicking on the desired report, it will open in a new tab or page.



Step 5: Sign the Report

Add your digital signature to confirm that you've viewed the report. Click on the signature prompt to complete this step.

The school has requested a digital signature confirming review of the student's report. By selecting the "Submit" button you are giving Wetaskiwin Regional Schools permission to record this as your digital signature.

[Submit Digital Signature](#)

Kindergarten
Info

WELCOME TO KINDERGARTEN!

LAKEDELL SCHOOL TIMETABLE 2024 2025

THIS SCHEDULE IS DRAFT AND MAY BE REVISED SLIGHTLY IN THE FALL.
The Bells will ring at the bolded times below.

WELCOME!	TIME	Day 1	Day 3
<p>Welcome to the Kindergarten Class of 2024 2025!!!</p> <p>We are excited to have you join our school! Mrs. Torgerson, our new Kindergarten teacher is planning all sorts of fun, flexible learning and exploration activities for you to enjoy throughout your Kindergarten year! You will learn many important literacy and numeracy foundational skills as well to continue to develop social skills as you play and learn with new friends!</p> <p>Lakedell families, we have been asked to implement a Rotating Schedule for the year to align with other schools, make it easier when sharing teaching staff between two or more schools and make it easier to coordinate shared support staff services such as our family school liaison and indigenous support workers.</p> <p>While we understand this may create confusion at first, by following the attached colour-coded calendar, you will know when Kindergarten students attend on Days 1 and 3. We have also included our tentative schedule that includes K-2 Maker Space, STEM and Outdoor Adventure time exploration!</p> <p>Mrs. Torgerson will be at Winfield teaching Kindergarten on Days 2 and 4.</p> <p>If you have not yet applied for busing through the school division, please complete the online application at https://www.wrps11.ca/division-office/transportation by selecting Rural Transportation Application.</p> <p>If you have any questions, or concerns, please do let us know by contacting Mrs. Fiveland at (780)586-2415, or by emailing stacey.fiveland@wrps11.ca.</p> <p>We can't wait to see you on your first day of school, Thursday, September 3rd!</p>	8:20-8:39 Buses/Morning Routine/Transition (20 MIN)	Morning Centers, Breakfast, Smudging are Available	
	Period 1 8:39 - 9:15 (36 MIN)	ELA	ELA
	Period 2 9:15 – 9:51 (36 MIN)	Library	ELA
	Period 3 9:51 – 10:27 (36 MIN)	Math	Math
	NUTRITION (K-6) 10:27-10:32 (5 MIN)	Snack	Snack
	RECESS (K-6) 10:32 -10:49 (17 MIN)	RECESS	RECESS
	Period 4 10:49 – 11:25 (36 MIN)	ELA	ELA
	Period 5 11:25 – 12:01 (36 MIN)	K-2 Maker Space/STEM, Centers, Outdoor Adventures	FLEX - a time for catch-up or extra ELA/Math
	12:01 - 12:16 (lunch) (15 MIN)	Lunch Time	
	12:16 -12:46 (recess) (30 MIN)	Recess Time	
	12:46 - 12:51(transition) (5 MIN)	Transition	
	Period 6 12:51 - 1:27 (36 MIN)	PEW	Math
	Period 7 1:27 - 2:03 (36 MIN)	Science	Science
	RECESS (K-6), 2:03 - 2:18 (15 MIN)	RECESS	RECESS
	Nutrition (K-6) 2:18 - 2:23 (5 Min)	Snack	Snack
	Period 8 2:23 – 2:59 (36 MIN)	Social Studies	Social Studies
	Period 9 2:59 - 3:35 (36 MIN)	ART	MUSIC
	Transition/Dismissal 3:35 - 3:40 (5 min)	Load Buses	Load Buses
	Supervision 3:40 - 3:45 (5 minutes)		

Lakedell SCHOOL Timetable 2024 2025

Grade 1/2 DRAFT

This schedule is DRAFT and subject to change.

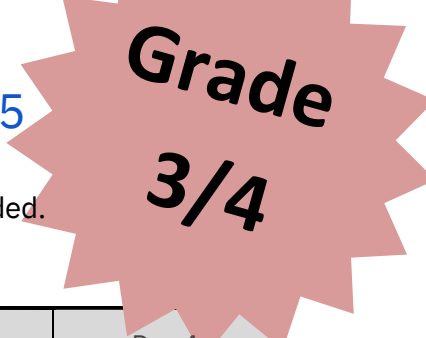
The Bells will ring at the bolded times below.

TIME	Day 1	Day 2	Day 3	Day 4
8:20-8:39 Buses/Morning Routine/Transition (20 MIN)	O'Canada, Announcements Morning Centers, Breakfast, Smudging are offered.			
Period 1 8:39 - 9:15 (36 MIN)	ELA	ELA	ELA	ELA
Period 2 9:15 – 9:51 (36 MIN)	1/2 PEW	PEW	PEW	PEW
Period 3 9:51 – 10:27 (36 MIN) NUTRITION (K-6)	1/2 Guided Reading	ELA	ELA	ELA
10:27-10:32 (5 MIN) RECESS (K-6)	Snack Time			
10:32 -10:49 (17 MIN) Period 4	Recess			
10:49 – 11:25 (36 MIN) Period 5	Social K-2 Maker Space, Centers, Outdoor Adventures	ELA	Social	ELA
11:25 – 12:01 (36 MIN) 12:01 - 12:16 (lunch) (15 MIN)		FLEX/Math	Library	FLEX/Social
12:16 -12:46 (recess) (30 MIN)	Supervision of lunch in classrooms.			
	Teachers Lunch			
12:46 - 12:51(transition) (5 MIN)	All staff on supervision.			
Period 6 12:51 - 1:27 (36 MIN)	Math	Math	Math	Math
Period 7 1:27 - 2:03 (36 MIN)	Math	Music 1/2	Math	Music 1/2
RECESS (K-6), 2:03 - 2:18 (15 MIN) Nutrition (K-6)				
2:18 - 2:23 (5 Min)				
Period 8 2:23 – 2:59 (36 MIN)	Science	Science	Science	Art
Period 9 2:59 - 3:35 (36 MIN) Transition/Dismissal	PEW (Health)	Social	Science	Social
3:35 - 3:40 (5 min) Supervision				
3:40 - 3:45 (5 minutes)	////////////////////	SWEEP	////////////////////	////////////////////

PEW - Mr. Woodward

Music - Mrs. Koehlmans -Cameron

Lakedell SCHOOL Timetable 2024 2025



This schedule is DRAFT and subject to change in the fall as needed.
The Bells will ring at the bolded times below.

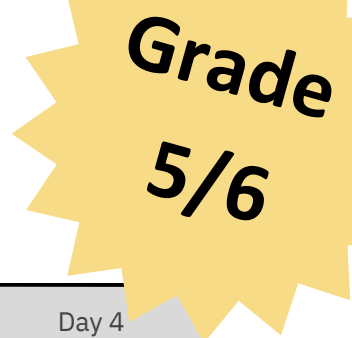
TIME	Day 1	Day 2	Day 3	Day 4
8:20-8:39 Buses/Morning Routine/Transition (20 MIN)	Morning Routine (Announcements, Smudging, Breakfast) Daily math or reading time.			
Period 1 8:39 - 9:15 (36 MIN)	Math	Math	Math	Math
Period 2 9:15 - 9:51 (36 MIN)	Math	Social	Math	Social
Period 3 9:51 - 10:27 (36 MIN) NUTRITION (K-6)	PEW 3/4	PEW	PEW	PEW
10:27-10:32 (5 MIN) RECESS (K-6)	Snack			
10:32 -10:49 (17 MIN) Period 4	Recess			
10:49 - 11:25 (36 MIN) Period 5	3-6 Options	ELA	ELA	ELA
11:25 - 12:01 (36 MIN) 12:01 - 12:16 (lunch) (15 MIN) 12:16 -12:46 (recess) (30 MIN)	ELA	Library	FLEX/Math	FLEX/ELA
	Lunch in Classrooms			
	Recess & Intramurals			
12:46 - 12:51(transition) (5 MIN)	Time to come in			
Period 6 12:51 - 1:27 (36 MIN)	ELA	ELA	ELA	ELA
Period 7 1:27 - 2:03 (36 MIN)	Science	Science	Science	Science
RECESS (K-6), 2:03 - 2:18 (15 MIN) Nutrition (K-6)	Recess			
2:18 - 2:23 (5 Min)	Snack			
Period 8 2:23 - 2:59 (36 MIN)	PEW	Music 3/4	Art	Music 3/4
Period 9 2:59 - 3:35 (36 MIN) Transition/Dismissal	Social	Science	Social	Gr. 3-6 Options
3:35 - 3:40 (5 min) Supervision For Teachers	Dismissal	Dismissal	Dismissal	Dismissal
3:40 - 3:45 (5 minutes)	////////////////////	////////////////////	////////////////////	////////////////////

PEW - Mr. Woodward
Music - Mrs. Koehlmans -Cameron

Ms. Wyley - Teach option either p4 Day 1 or p 9 Day 4
Ms. Strachan/Ms. Jennsdottir - Teach option either p4 day 1 or p9 day 4

Lakedell SCHOOL Timetable 2024 2025

Grade 5/6



This schedule is DRAFT and subject to change in the fall as needed.
The Bells will ring at the bolded times below.

TIME	Day 1	Day 2	Day 3	Day 4
8:20-8:39 Buses/Morning Routine/Transition (20 MIN)	Leadership opportunities for Grade 5/6 (Announcements, Smudging, Library & Breakfast Helpers, etc.), and/or participation as well. Daily math or reading time.			
Period 1 8:39 - 9:15 (36 MIN)	5/6 PEW	PEW	PEW	PEW
Period 2 9:15 – 9:51 (36 MIN)	ELA	ELA	ELA	ELA
Period 3 9:51 – 10:27 (36 MIN)	ELA 5/6 Guided Reading (Stacey Support)	ELA	ELA	ELA
NUTRITION (K-6) 10:27-10:32 (5 MIN)	Snack			
RECESS (K-6) 10:32 -10:49 (17 MIN)	Recess			
Period 4 10:49 – 11:25 (36 MIN)	Gr. 3-6 Option/ Sports Performance	SS	Science	SS
Period 5 Flex/Pursuits 11:25 – 12:01 (36 MIN)	FLEX/Math/ELA	FLEX/Art	FLEX/Art	Library
12:01 - 12:16 (lunch) (15 MIN)	Lunch			
12:16 -12:46 (recess) (30 MIN)	Recess, Clubs & Intramurals			
12:46 - 12:51(transition) (5 MIN)	Time to come in			
Period 6 12:51 - 1:27 (36 MIN)	MATH	MATH	MATH	Music 5/6
Period 7 1:27 - 2:03 (36 MIN)	MATH	MATH	MATH	Science
RECESS (K-6), 2:03 - 2:18 (15 MIN)	Recess			
Nutrition (K-6) 2:18 - 2:23 (5 Min)	Snack			
Period 8 2:23 – 2:59 (36 MIN)	Science	SS	Science	Math
Period 9 2:59 - 3:35 (36 MIN) Transition/Dismissal	SS	Music 5/6	Science	Gr. 3-6 Option /Miss Roberta Dismissal
3:35 - 3:40 (5 min) Supervision For Teachers	Dismissal	Dismissal	Dismissal	
3:40 - 3:45 (5 minutes)				

PEW - Mr. Woodward Music - Mrs. Koehlmans -Cameron
Other Options will be offered quarterly by teachers. These are yet to be finalized.

2024-2025 Calendar

Day 1-4 Rotation

with Kindergarten Days

August 2024					September 2024					October 2024					November 2024				
M	T	W	T	F	M	T	W	T	F	M	T	W	T	F	M	T	W	T	F
			1	2	2	3	4	5	6		1	2	3	4					1
					9	10	11	12	13	7	8	9	10	11	2	4	5	6	7
5	6	7	8	9	1	2	3	4	1	4	1	2	3		2	3	4	1	2
12	13	14	15	16	16	17	18	19	20	14	15	16	17	18	11	12	13	14	15
19	20	21	22	23	2	3	4	1	2	21	22	23	24	25	Fall Break				
26	27	28	29	30	3	4	1	2	3	4	1	2	3	4	18	19	20	21	22
					30					28	29	30	31		3	4	1	2	3
										1	2	3	4		25	26	27	28	29
															4	1	2	3	4

December 2024					January 2025					February 2025					March 2025				
M	T	W	T	F	M	T	W	T	F	M	T	W	T	F	M	T	W	T	F
							1	2	3	3	4	5	6	7	3	4	5	6	7
2	3	4	5	6	6	7	8	9	10	2	3	4			10	11	12	13	14
1	2	3	4		3	4	1	2	3	10	11	12	13	14	4	1	2	3	
9	10	11	12	13	13	14	15	16	17	17	18	19	20	21	17	18	19	20	21
1	2	3	4	1	4	1	2	3	4	2	3	4	1		4	1	2	3	4
16	17	18	19	20	20	21	22	23	24	24	25	26	27	28	24	25	26	27	28
2	3	4	1	2	1	2	3	4	1	2	3	4	1	2	Spring Break				
Christmas Break					27	28	29	30	31						31				
30	31				2	3	4	1							1				

April 2025					May 2025					June 2025				
M	T	W	T	F	M	T	W	T	F	M	T	W	T	F
		1	2	3				1	2	2	3	4	5	6
	2	3	4	1	5	6	7	8	9	1	2	3	4	1
7	8	9	10	11	3	4	1	2	3	9	10	11	12	13
2	3	4	1	2	12	13	14	15	16	2	3	4	1	2
14	15	16	17	18	4	1	2	3		16	17	18	19	20
3	4	1			19	20	21	22	23	3	4	1	2	3
21	22	23	24	25	4	1	2	3		23	24	25	26	27
	2	3	4	1	26	27	28	29	30	4	1	2	3	
28	29	30			4	1	2	3	4	30				
2	3	4												

LEGEND	
Kindergarten at Lakedell School	
PLC Days	
Organizational Day	
Schools Closed	
Teachers Conv	

TERM DATES
 Semester 1: September 3 - January 30
 Quarter 1: September 3 - November 6
 Quarter 2: November 7 - January 30
 Semester 2: February 3 - June 26
 Quarter 3: February 3 - April 16
 Quarter 4: April 22 - June 26

DAYS OF SCHOOL OPERATION		
Total Instructional Day		Instructional
Total Non Instructional Days	Semester 1	89
Total Operational Days	Semester 2	90

For Calendar Definitions & Guidelines see: [AP 130 Learning Calendar](#)



Yellow days are kindergarten days, while the calendar then represents the 4 Day Rotational Calendar.

Kindergarten - Supplies List - Miss Torgerson

2024-2025

Required Items:

- 2 - Duotangs (3 prong) – Any Colour
- 2- Hilroy Exercise Book – **Plain** on top & **Interlined** on bottom (23.1 cm X 18 cm)– 72 pages
- 1 - Staedtler Norica HB #2 Pencils (pre-sharpened) – 12 pack
- 1 - Box of 24 crayola wax crayons
- 1 - Crayola broad tip markers 10 pack washable
- 4 - Large white glue sticks
- 2 - White erasers
- 4 - Expo fine tip dry erase markers
- 1 - Fiskars 5” Blunt Scissor
- 1 - Hilroy scrapbook 30 sheets (12” x 10” - 30.5cm x 24.5cm) green cover
- 1 - Plastic Pencil Box (8.25” x 5.5” x 2.5”)
- 3 - Facial Tissue – 100 sheets
- 6 - Large ziploc bags (approx.10 ½” x 11”- 26cm x 27cm)
- 1 - small reusable water bottle (non leaking)
- 1 - Headphones (no earbuds please)

Additional Required Items:

- 1 – Backpack and lunch kit**
- 1 - Indoor Running Shoes (non-marking)**
- Purchase Velcro running shoes unless your child knows how to tie their own shoes**

****An additional set of clothes (to be kept at school, for spills/accidents)**

Grade One Supply List- Mrs. Kelly

2024-2025

Required Items:

- 4 –Duotangs (3 prong) – Any Colour
- 3 - Hilroy Exercise Book – **Dotted Interlined** (9 1/8" x 7 1/8") – 72 pages
- 4 - Staedtler Norica HB #2 Pencils (pre-sharpened) – 12 pack
- 6 - White Premium Eraser
- 2- White glue sticks
- 1 - Crayola Colored Pencils (pre-sharpened) -24 pack
- 1 - Crayola Original Thick Washable Markers (Conical Tip) – 8 pack
- 8 - White Board (dry erase) Fine Tip Markers
- 1 - Expo Dry Eraser
- 1 - Fiskars 5" Blunt Scissor
- 1 - Plastic Pencil Box (8.25" x 5.5" x 2.5")
- 3 - Facial Tissue – 100 sheets
- 1 – Box of Large Ziploc type Bags (approx.10 ½" x 11"- 26cm x 27cm)
- 1 - Box of plastic spoons
- 1 - Headphones

Additional Required Items: 1 – Backpack and lunch kit

1 – Indoor Running Shoes for Gym (non-marking)

Purchase Velcro running shoes unless your child knows how to tie their own shoes.

Grade Two Supply List- Mrs. Kelly

2024-2025

Required Items:

- 5 –Duotangs (3 prong) – Any Colour
- 5 - Hilroy Exercise Book – **Dotted Interlined** (9 1/8" x 7 1/8") – 72 pages
- 4 - Staedtler Norica HB #2 Pencils (pre-sharpened) – 12 pack
- 6 - White Premium Eraser
- 2- White glue sticks
- 1 - Crayola Colored Pencils (pre-sharpened) -24 pack
- 1 - Crayola Original Thick Washable Markers (Conical Tip) – 8 pack
- 8 - White Board (dry erase) Fine Tip Markers
- 1 - Expo Dry Eraser
- 1 - Clear Plastic Ruler (mm/cm) – 30 cm
- 1 - Fiskars 5" Blunt Scissor
- 1 - Coil Bound Sketch book (approx 8 ½ x 11 with thicker pages)
- 1 - Plastic Pencil Box (8.25" x 5.5" x 2.5")
- 3 - Facial Tissue – 100 sheets
- 1 – Box of Large Ziploc type Bags (approx.10 ½" x 11"- 26cm x 27cm)
- 1 - Box of plastic spoons
- 1 - Headphones

Additional Required Items:

- 1 – Backpack and lunch kit
 - 1 - Indoor Running Shoes for Gym (non-marking)
- Purchase Velcro running shoes unless your child knows how to tie their own shoes.**

Grade Three/Grade Four Supply List – Ms. Wyley

2024-2025

Required Items:

- 2 - Pkg. of 4 (8) Hilroy Report Cover duotangs (Prongs)
- 1 - Hilroy Lined Loose-leaf Paper – 100 sheets
- 1- 1 inch binder (no zippered binders)
- 2 - lined notebooks (8.5x11 inches)
- 5 - Staedtler Norica HB #2 Pencils (pre-sharpened) – 12 pack
- 8 - White Premium Eraser
- 1 - Bic Pen (medium blue)
- 1 - Bic Pen (medium red)
- 1 - Crayola Colored Pencils (pre-sharpened) – 24 pack
- 1 - Crayola Wax Crayons – 24 pack
- 1 - Crayola Original Fine Line Washable Markers – 12 pack
- 1 - Bic Highlighter
- 1- Sharpie Permanent Marker-BLACK (ultra fine tip)
- 1- Sharpie Permanent Marker-BLACK (fine tip)
- 2 - Post It Notes (3" x 3") – 100 sheets/pad
- 6- Expo Low Odor Dry Erase Chisel Tip Marker (black)
- 1 - Expo Dry Eraser
- 1 - Scissor
- 2 - Glue Stick
- 1 - Clear Plastic Ruler (mm/cm) – 30 cm
- 1 - White Glue
- 1 - Plastic Pencil Box (8.25" x 5.5" x 2.5")
- 1 - Facial Tissue – 100 sheets
- 1- Large freezer ziploc bags
- 1 - Headphones

Additional Required Items:

- 1 - Indoor Running Shoes for Gym (non-marking)**

Purchase Velcro running shoes unless your child knows how to tie their own shoes.

Grade Five and Six Supply List – Ms. Jensdottir 2024-2025

Please note: several of these items might need to be restocked throughout the year. If that is the case, a note will be written by the student as a reminder in their agenda.

Required Items:

- 1 package of 50-100- Lined Loose Leaf paper
- 1 - 1"-1.5" (not bigger) Binder → please refrain from purchasing a zipper binder. Simple 3-ring binder will be enough
- 1- min. 50 sheets Grid paper notebook
- 1 package of at least 6 - Dividers
- 3- Duotangs (3 prong) – Assorted Colors
- 1- Blue Pen
- 1 - Red Pen
- 2- Staedtler Norica HB #2 Pencils (pre-sharpened) – 12 pack
- 2 - White erasers
- 1 - Pencil Crayon package – 24 pack
- 1 - Package of markers – 12 pack
- 5 - Highlighters (assorted colours)
- 4- Whiteboard markers (Expo)
- 2- Glue sticks
- 1 - Plastic Ruler (mm/cm) – 30 cm
- 1 - Geometry set (Staedtler 9 piece)
- 3 - Packages of Post It Notes (3" x 3") → multi-coloured is fine!
- 1 - Scissors
- 1 - Tub-Style Pencil Sharpener
- 1 - Coiled Sketchbook (approx. 8.5" x 11") (Hilroy)
- 1 - Fabric pencil case
- 2 - Facial Tissue boxes
- 1 – Head Phones → Please note: We use these quite frequently in class, so having a set to KEEP at school would be a benefit

Additional Required Items:

- 1-IndoorShoes(non-marking)**

Musical
Theater
Camp

Register by emailing
singingberta@gmail.com
Music with Ms.Roberta



Summer on the Stage



Lakedell Elementary Gym and Stage

9:30a.m.-12:30p.m

Singing, Acting, Fun

July 22-July 26

Ages 7-12, \$120



CONNECTIVITY DANCE LTD

IT'S YOUR TIME TO SHINE!
JOIN US FOR SOME SUMMER FUN!

Join us for CDL

Sampler Week

Come Out and Try a Class

June 17th to 22nd

Register Now Available Online at
connectivitydance.com/sampler-week



SKIPPING IN THE SUN

JUMP WITH US THIS SUMMER

Head to connectivitydance.com
for more info

Get Ready to Level Up!

Take Your Training to the Next Level this Summer

July 8th July 15th July 22nd July 29th	Monday/Wednesday 4:00-5:30pm Ballet Foundations	July 9th July 16th July 23rd July 30th/Aug 1	Tuesday/Thursday 4:00-5:30pm Tap Fundamentals
	4:00-5:30pm Beginner Acro & Stretch		4:00-5:30pm Advanced Grooves & Breaking
	5:30-7:00pm Jazz Foundations		5:30-7:00pm Advanced Tap
	5:30-7:00pm Advanced Acro & Conditioning		5:30-7:00pm Hip Hop Fundamentals

Connectivity Dance Presents Together We Dance

June 8 & 9 2024

MACLAB CENTRE
OF THE PERFORMING ARTS

What's available
https://promacslab.ticketpro.ca/en/pages/MacLab_CD24

SAVE THE DATE

2024/ 2025

SEASON
REGISTRATION
OPENS JULY 1ST!

SUMMER OF DANCE 2024

Activity Camp

July 15-18
July 22-25

Dance, Sports
Games, Theatre,
Art & More!

Registration
\$75 per day

FOLLOW US ON INSTAGRAM/FACEBOOK
@CONNECTIVITYDANCE

BALLET*JAZZ*TAP*MODERN*LYRICAL*HIPHOP*BREAKDANCE*ACRO*JUMPROPE



ART & BOOK CLUB

@ THE PIGEON LAKE PUBLIC LIBRARY

CLUB

JOIN THE WRPS WELLNESS SUPPORT TEAM FOR A FREE, FUN SOCIAL-EMOTIONAL ART AND BOOK CLUB WITH NEW TOPICS EVERY WEEK.
EVERY MONDAY MORNING FROM 10:30AM-11:30AM
JULY 8TH - AUGUST 19TH
AGES 7-12 WELCOME.

Please pre-register here:



Please contact Emily Gibson at emily.gibson@wrps11.ca if you have any questions!



LEGO CLUB

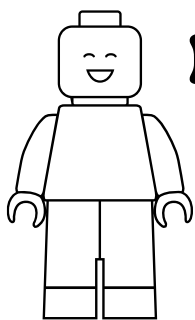
Wednesday Afternoons from

July 3rd- August 21st

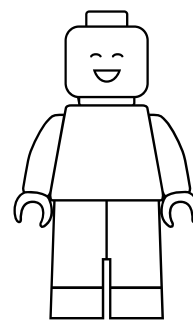
Join the WRPS Wellness Support Team for a free, fun, interactive Lego Club this summer focusing on social skills, team-building and creative play with new topics every week.

We will be meeting every Wednesday afternoon from 1:00pm-2:00pm at the Pigeon Lake Public Library.

Ages 7-12 welcome.



Please pre-register here:



Please contact Emily Gibson at emily.gibson@wrps11.ca if you have any questions!

PIGEON LAKE PLAY IN THE PARK

Join the Wetaskiwin Regional Public School Wellness Team for a FREE weekly drop-in program this summer.

Starting Wednesday July 3rd, join us at Lakedell School Playground for outdoor crafts, activities and play.

Every Wednesday @
Lakedell School Playground

*weather dependent

10:30AM - 12:00PM

Ages 5-12

Please note: there will be adult supervision provided but parents of children younger than 5 will need to be present for the duration of the program.

Please contact Emily Gibson at
emily.gibson@wrps11.ca with any questions!

